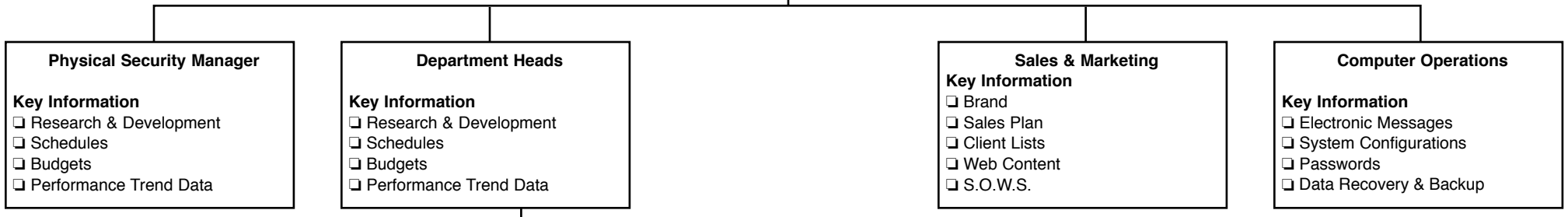


**Level 1:**  
Security Posture  
Statements Should Be  
Consistent with Corporate  
Mission Statement

**Level 2:**  
Represents  
Organizational  
Information Ownership

George Smith, CEO

**Security Posture Statement:**  
Users will be allowed to access all systems for business use through various access methods (i.e Internet, Personal Devices, Corporate LAN, etc.) while taking every precaution to maintain a high level of Information Security and Privacy. Public access will be restricted to an isolated web site only.



**Level 3:**  
Track Trends to  
Each Piece of  
Information Presented  
at Level 2

**Level 4:**  
Tracks Estimated Single  
Loss Exposure

	R & D Plans	Dept. Schedules	Dept. Budgets	Performance Trends	Departmental Databases	
Threats	- Stolen - Manipulated - Destroyed	- Stolen - Manipulated - Destroyed	- Stolen - Manipulated - Destroyed	- Stolen - Manipulated - Destroyed	- Stolen - Altered - Blocked Access - Destroyed - Compromised (unauthorized access)	
Availability of Countermeasure	high	med	high	high	low	
Access Requirements	Dept. & Upper Management	Write - Dept. Read - Workers	Dept. & Upper Management	Write - Dept. Read - Workers Management	Full - Management Select - Dept. Workers	
Countermeasures	-encryption -restricted access	-encryption -restricted access	-encryption -restricted access	-encryption -restricted access	-encryption -authentication -regular backups -password changes	
Asset Recovery Value	\$150,000	\$30,000	\$75,000	\$30,000	\$250,000	
Exposure Value	40%	50%	35%	40%	65%	
Neg						
SI Prodigy	\$60,000	\$15,000	\$26,250	\$12,000	\$162,500	
Exposure Value	%	30%	10%	10%	10%	
ATE	\$31,800	\$14,500	\$2,626	\$1,200	\$130,000	1140.125
Exposure Value	10%	10%	10%	5%	10%	
Pos						
STE (past)	\$15,000	\$3,000	\$7,500	\$1,500	\$25,000	
Practicality of Occurance (past)	1%	4%	1%	1%	3%	
ATE (past)	\$150	\$120	\$75	\$15	\$750	\$1,110
Cost of Countermeasure	\$1,000	\$1,000	\$1,000	\$1,000	\$15,000	
CBA	\$650	\$3,380	\$1,550	\$185	\$114,250	\$120,015

SAM = CBA GradeVALE (orig)  
Grade A SAM = 0.81  
95%

Fig. 2.5